

YAMAHA THR-II Series Update Manual

Special Notices

- The software and this Update Manual are the exclusive copyrights of Yamaha Corporation.
- Copying of the software or reproduction of this Update Manual in whole or in part by any means is expressly forbidden without the written consent of the manufacturer.
- Yamaha makes no representations or warranties with regard to the use of the software and documentation and cannot be held responsible for the results of the use of this Update Manual and the software.
- For information about the latest information of THR Remote, check the web site below.
<http://download.yamaha.com/>
- The screen displays as illustrated in this Update Manual are for instructional purposes and may appear somewhat different from the screens which appear on your computer.
- Copying of the commercially available musical data including but not limited to MIDI data and/or audio data is strictly prohibited except for your personal use.
- Click on the blue-colored text to jump to the related item in this manual.
- Windows is a registered trademark of Microsoft® Corporation in the United States and other countries.
- Apple, Mac and Macintosh are trademarks of Apple Inc., registered in the U.S. and other countries.
- The company names and product names in this Update Manual are the trademarks or registered trademarks of their respective companies.
- Future upgrades of application and system software (e.g., firmware of the products) and any changes in specifications and functions will be announced at the following website.
<http://download.yamaha.com/>

This Update Manual assumes that you are already familiar with basic Windows/Macintosh operations. If you are not, please refer to the owner's manual which came with your Windows/Mac OS software before using the THR Remote.

The screen illustrations in this manual are mainly taken from Windows (with the THR-II connected). Differences that exist in the Macintosh version are duly shown and explained.

Update the THR Firmware

1. Connect the AC adapter to the THR and switch the THR unit to “ON”.

2. Connect the THR to your Windows/Mac computer via a USB2.0 cable.

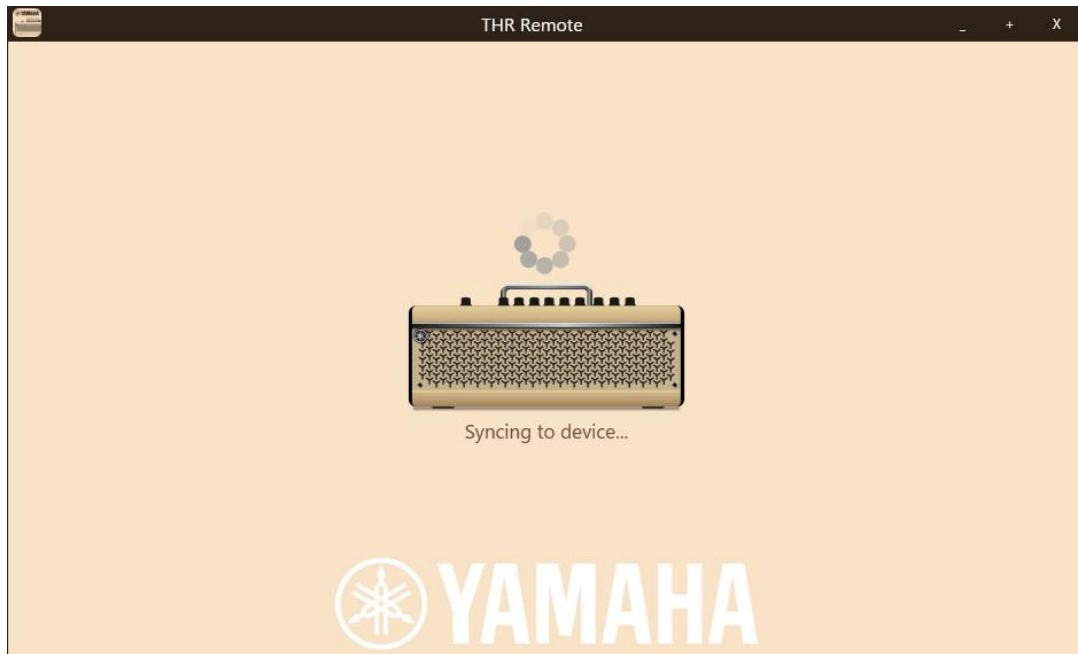
Please use a (Type A – Type B) USB 2.0 cable (sold separately) as shown below.

* For Mac computers equipped with USB type C, use the “USB-C Digital AV Multiport Adapter” or “USB-C to USB Adapter” and the AB type USB 2.0 cable (both sold separately / prepared separately).



3. Open the THR Remote application as shown below and wait for the THR amp and your computer to sync and detect that a firmware update is available.

* Please install THR Remote (Windows / Mac) on your PC in advance. You can download the latest version of THR Remote [here](#).



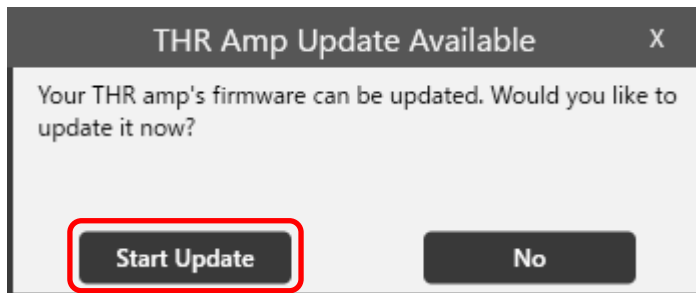
When the synchronization is completed, the following screen will be displayed.



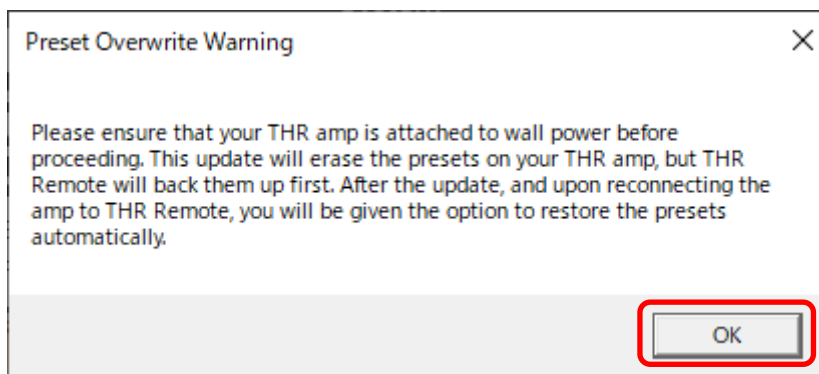
4. If a new firmware update is available for your THR, you will see the below window appear. The THR is now ready to begin the Firmware Update.

Click **[Start Update]**.

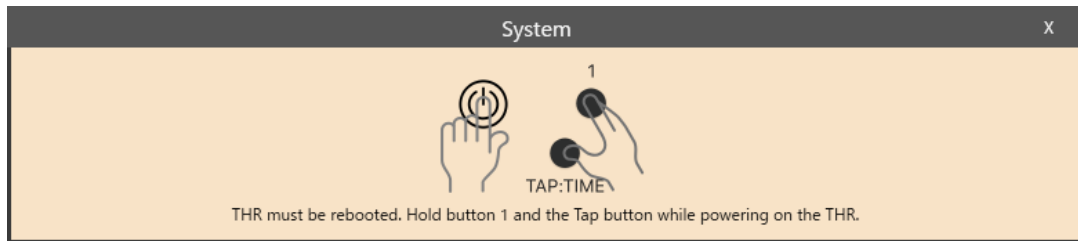
* This dialog is not displayed when there is no need to update your THR.



5. Before the update begins, your presets will automatically be saved. Click **[OK]**.
The THR will automatically turn off.



6. Press the [TAP/TIME] and [USER MEMORY 1] buttons simultaneously while powering on the THR.

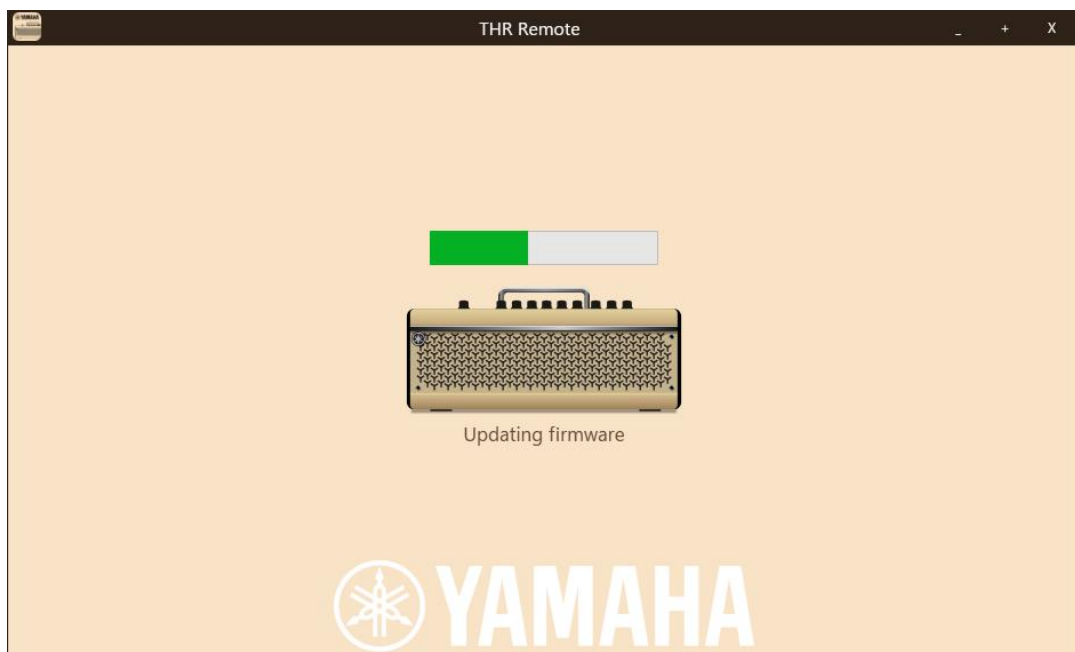


When [U] is displayed on the LED display of THR, release the button.

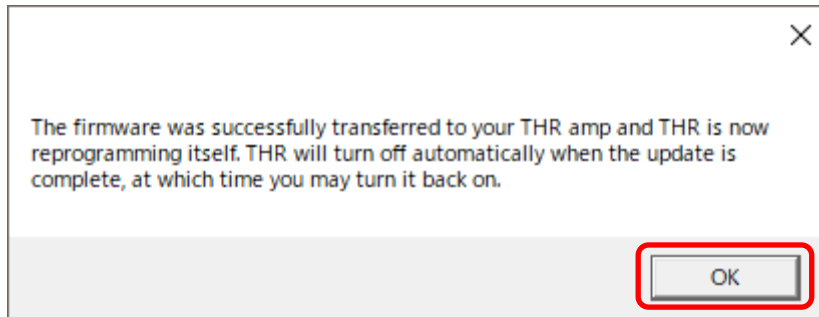
* The display of [U] means that THR is in update mode. The necessary data is transferred from the computer to the THR.



7. The firmware transfer will start. The process should take approximately 2 minutes.



8. You will see the below notice when the firmware has been transferred successfully.
Click [OK].



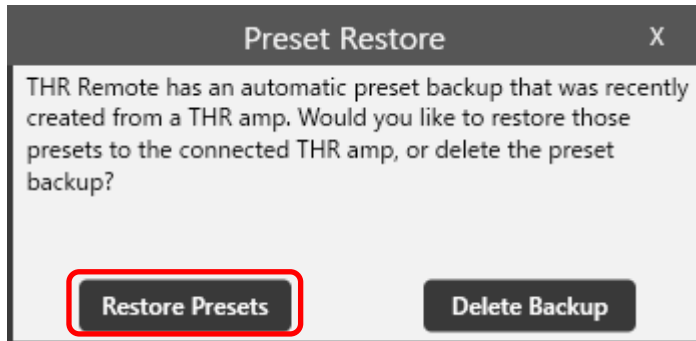
Note: After clicking [OK], the firmware update will start on the THR. This should take approximately 1 minute to complete. When [U] is displayed on the LED display and the green lamp blinks at the top of the letters, it is loading. **DO NOT TURN OFF THE POWER** during this process.



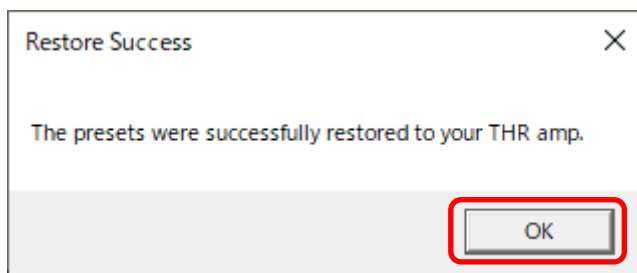
When the update is completed, [E] → [n] → [d] is displayed on the LED display of THR unit, and the THR is automatically turned off.

9. Switch the THR unit to "ON" again

10. After the reboot is complete, the below window will appear. Click **[Restore Presets]** to restore your presets.



Click **[OK]** when the below window appears, indicating the Preset Restore was a success.



This completes the THR-II Firmware Update.

Update Line 6 Relay G10T transmitter Firmware

1. [Follow steps 1 to 3 of updating THR](#) to connect your computer and THR-II with a USB cable and synchronize. At this time, if you insert the Relay G10T into the guitar input jack of the THR, the firmware version of the Relay G10T will be confirmed.
2. If an older version of Relay G10T firmware is detected, one of the below windows will appear.
 - * If a window does not appear, the Relay G10T already has the latest firmware version and does not need to be updated.

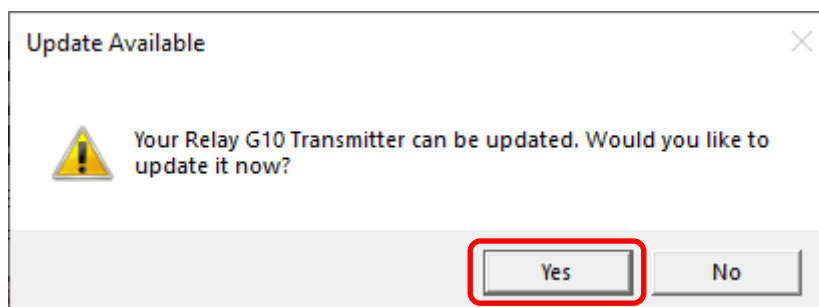
2.1. For Relay G10T with firmware 1.04 or earlier



Click **[More Info]** for an important notice regarding Relay G10T firmware 1.04. This information is also available from the following URL.

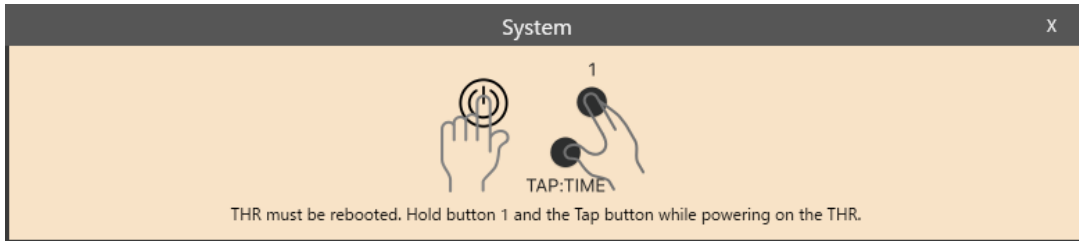
http://4wrd.it/THR_CAUTION/

2.2. For Relay G10T with firmware 1.05 or later



Click **[Yes]** and proceed to the next step. The THR will automatically turn off.

3. Press the [TAP/TIME] and [USER MEMORY 1] buttons simultaneously while powering on the THR.

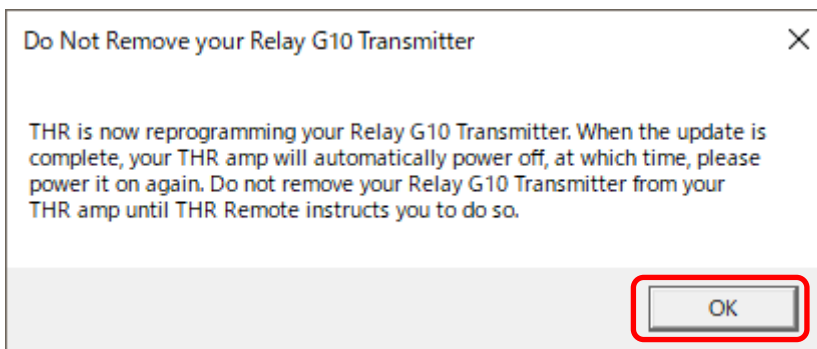


When [U] is displayed on the LED display of THR, release the button.

* The display of [U] means that THR is in update mode. The necessary data is transferred from the computer to the THR.



4. The below window will appear during reprogramming. Click [OK].



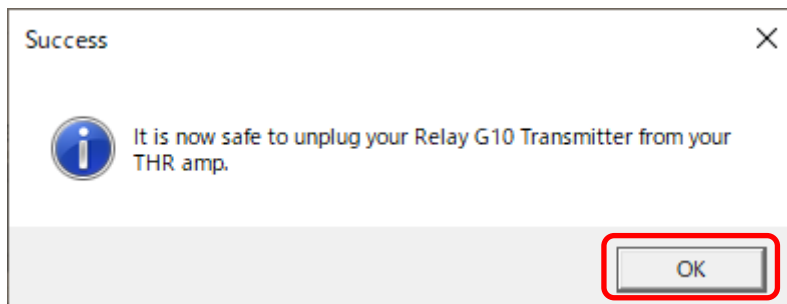
While the Relay G10 transmitter is being updated, the Relay G10T LED will be red.

DO NOT REMOVE the Relay G10T from the input until the firmware update is complete.



When update is completed, [E] → [n] → [d] will be displayed on the LED display of THR unit, and the THR will turn off automatically. With the Relay G10T still inserted, proceed to the next step.

5. Switch the THR unit to “ON” again (Relay G10T is inserted).
6. You will see the below notice when the firmware has been updated successfully. Click [OK].



This completes the Relay G10T Firmware Update.