



POCKETRAK W24

Firmware Update Guide

This document explains how to update the POCKETRAK W24 firmware to the latest version.

Precautions (Please be sure to read this section first!)

- The user assumes full responsibility for the update.
- You should replace the current battery with a new alkaline battery before updating. If you are using a rechargeable battery, the battery needs to be fully charged before updating.
- You should back up all important data before updating.
- If you fail to follow these instructions properly, or turn off the POCKETRAK W24 while the update is in progress, the POCKETRAK W24 may be damaged.
- If the POCKETRAK W24 does not work properly after updating, and you've tried updating several times, please contact your Yamaha dealer.
- The screens shown in this guide are of Windows Vista. The screens, the menu items and buttons displayed on your computer may not exactly match those shown in this documentation, depending on the OS version or manufacturer of your computer.
- This documentation is copyrighted by Yamaha Corporation.
- Reproducing or modifying all or part of this documentation without permission is strictly prohibited.
- Windows is a registered trademark of Microsoft® Corporation in the United States and other countries.
- Apple, Mac and Macintosh are trademarks of Apple Inc., registered in the U.S. and other countries.
- The company names and product names in this guide are the trademarks or registered trademarks of their respective companies.


Firmware version history

Ver 1.03Y

Fixed a problem in which the remote control did not function properly when recording in PCM 24-bit mode and with ALC set to off.

Updating the firmware (Total nine (9) steps)

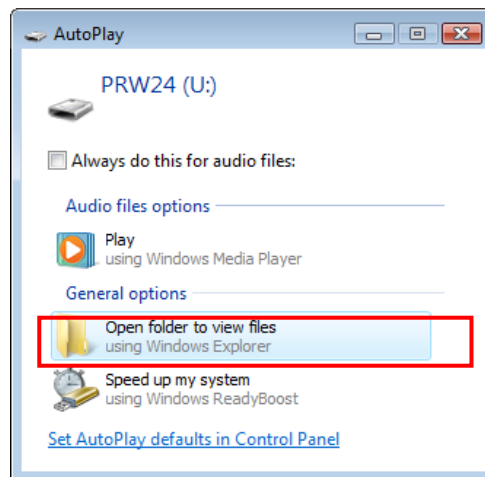
- 1.** You should save important data in the POCKETRAK W24 to your computer for backup purposes before updating.
- 2.** Download the latest firmware from the following website.
<http://www.yamahasynt.com/downloads/>
- 3.** Turn off the power of the POCKETRAK W24, and then connect the POCKETRAK W24 to your computer via a USB cable.

4. Click  [Start] menu → [Computer], and then double-click the “PRW24” icon to open the window.

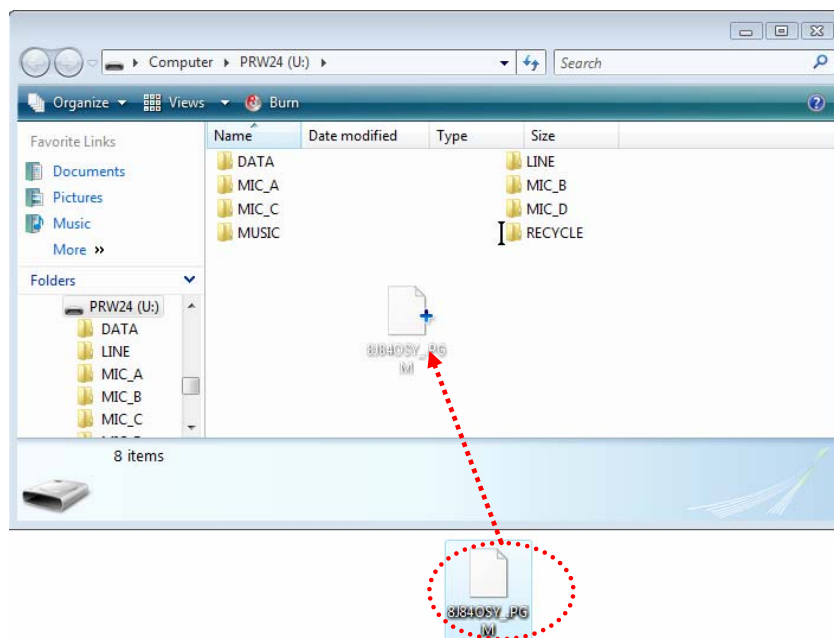
(Macintosh users: Double-click the “PRW24” icon displayed on the desktop to open the window.)

Note

- If a microSD card is inserted in the POCKETRAK W24, the “PRW24” and “PRW24SD” icons may be displayed. Make sure to open the “PRW24” icon.
- If the “AutoPlay” screen appears, double-click “Open folder to view files” to open the window.




5. Copy the file “8J84OSY_.PGM” extracted from the downloaded file to the root folder of the “PRW24.” Please do not change the file name here.

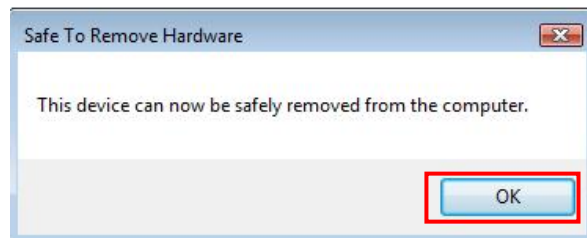


Important

Make sure to copy the file directly to the root folder of the “PRW24.” If you copy the file to the

DATA or MIC_(A-D) folder etc, the POCKETRAK W24 will not be updated.

6. Click the  icon (Safely Remove Hardware) on the taskbar at the bottom right of the Windows screen, and then click [Safely remove USB Mass Storage Device].
7. After the computer displays the following message, click [OK], and then remove the USB cable.



Macintosh users:

Drag and drop the “PRW24” icon on the desktop to the Trash Can to disconnect the POCKETRAK W24 from your computer.

8. Turn on the power of the POCKETRAK W24, press and hold down the [MENU/ENTER] button for at least two seconds, select COMMON MENU→UPDATE→YES with the [VOL +/-] button, and then press the [MENU/ENTER] button.
POCKETRAK W24 starts writing the firmware.

Note

If the UPDATE menu is not displayed in the COMMON MENU, make sure that the file is copied to the root folder of the “PRW24” and the file name is not changed from “8J84OSY_.PGM.”

9. The writing will be completed after about ten seconds, and then return to the normal screen.
The update is now complete.

To check whether the firmware was correctly updated

Turn on the power of the POCKETRAK W24, press and hold down the [MENU/ENTER] button for at least two seconds, and then select COMMON MENU → VERSION. If the “Ver 1.03Y” is displayed on the screen, the firmware is correctly updated.

© 2011 Yamaha Corporation
1106-C0