

YAMAHA YHT-392 Digital Home Theater System

Connection Guide

English

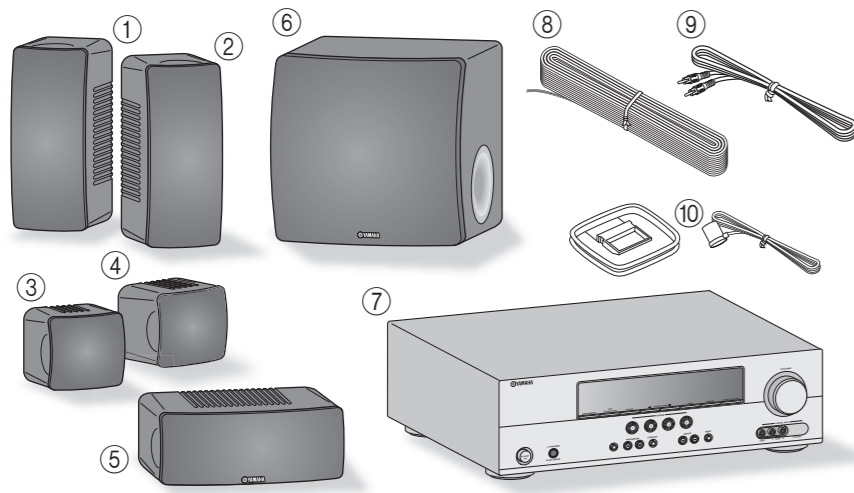
YAMAHA CORPORATION
© 2009 Yamaha Corporation All rights reserved.
Printed in China W86880

The Yamaha YHT-392 Digital Home Theater System includes everything you need to add great sound to your home theater. By following the steps in this Connection Guide, you'll have your home theater set up in no time and be enjoying music and movies like never before. Part A explains how to connect the speakers and antennas. Part B explains how to connect various AV components. See the relevant owner's manuals for full instructions and precautions.

Caution: Disconnect all components from AC outlets before proceeding.

Part A: Speakers and Antennas

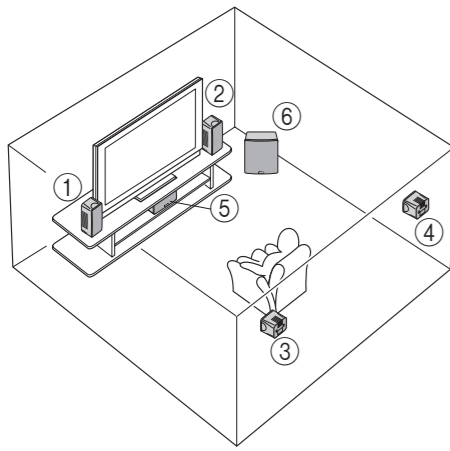
1 Checking the package contents



Unpack and check the package contents. The following items are necessary to complete this Connection Guide. See the owner's manuals for a complete list of supplied items.

- ①+② Front Speakers (NS-B380)
- ③+④ Surround Speakers (NS-B280)
- ⑤ Center Speaker (NS-C380)
- ⑥ Subwoofer (NS-SW380)
- ⑦ AV Receiver (HTR-6230)
- ⑧ Speaker cable
- ⑨ Subwoofer cable
- ⑩ FM and AM antennas

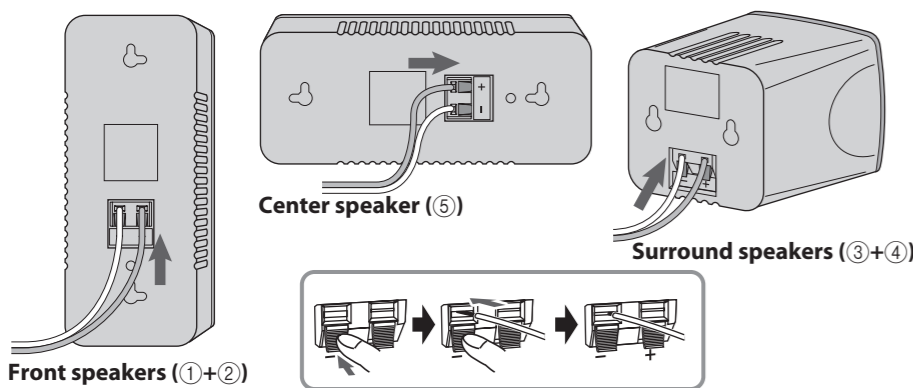
2 Positioning the speakers



- ① Front left speaker
- ② Front right speaker
- ③ Surround left speaker
- ④ Surround right speaker
- ⑤ Center speaker
- ⑥ Subwoofer

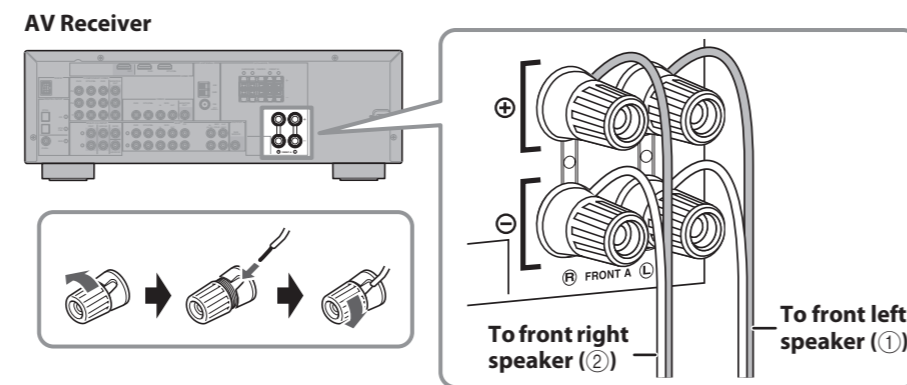
Position the speakers as shown. See the owner's manuals for more information on installing the speakers.

3 Preparing the cables and speakers



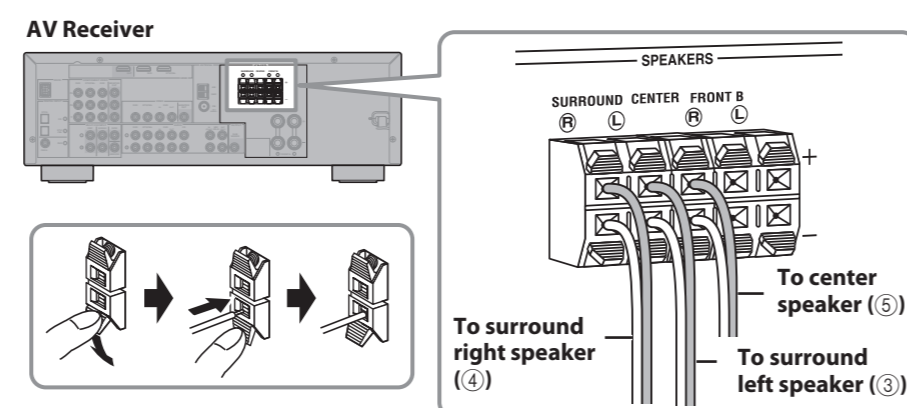
- Cut the included speaker cable to suitable lengths for the front, center, and surround speakers. You need to make five cables altogether. Remove about 10 mm (3/8 in.) of insulation from the end of each wire, and then twist the bare strands tightly.
- Connect the speaker cables to the front speakers (①+②), surround speakers (③+④), and center speaker (⑤). Connect the colored wire to the red positive (+) terminal, and connect the other wire to the black negative (-) terminal. See the owner's manuals for more information on connecting the speaker cables.

4 Connecting the front speakers



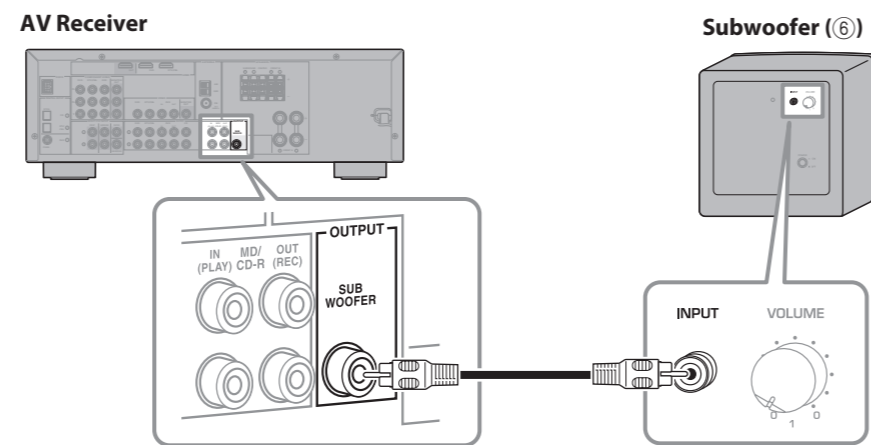
Connect the front speaker (①+②) cables to the AV Receiver. Be sure to connect the colored wire to the red positive (+) terminal, and connect the other wire to the black negative (-) terminal.

5 Connecting the center and surround speakers



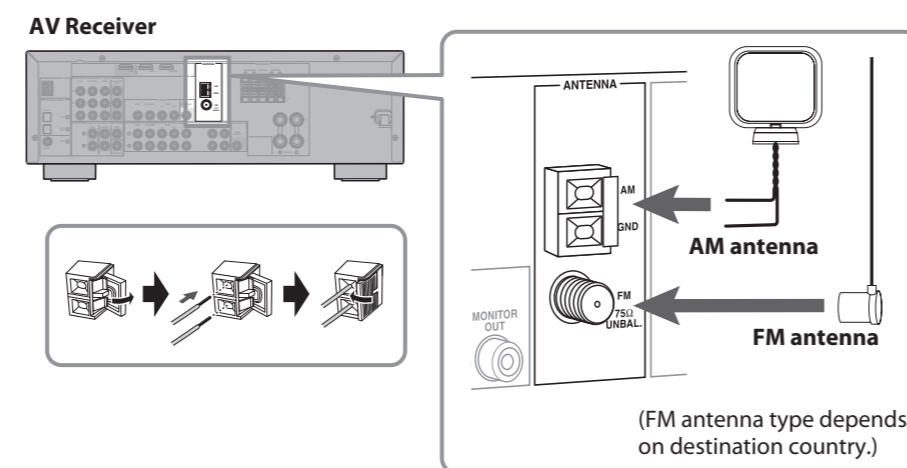
Connect the center speaker (⑤) and surround speaker (③+④) cables to the AV Receiver. Be sure to connect the colored wire to the red positive (+) terminal, and connect the other wire to the black negative (-) terminal.

6 Connecting the subwoofer



Use the included subwoofer cable to connect the Subwoofer's INPUT jack to the AV Receiver's SUBWOOFER OUTPUT jack.

7 Connecting the antennas

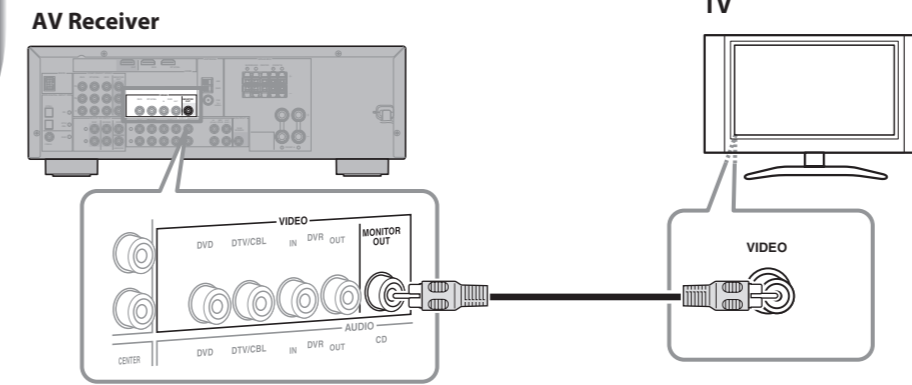


Connect the AM loop antenna and indoor FM antenna to the AV Receiver, as shown. See the owner's manuals for more information about connecting antennas.

Part B: AV Components

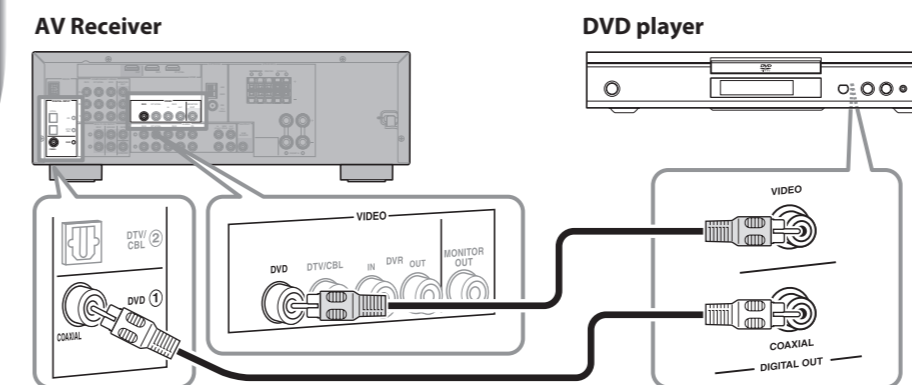
Caution: Disconnect all components from AC outlets before proceeding.

1 Connecting your TV



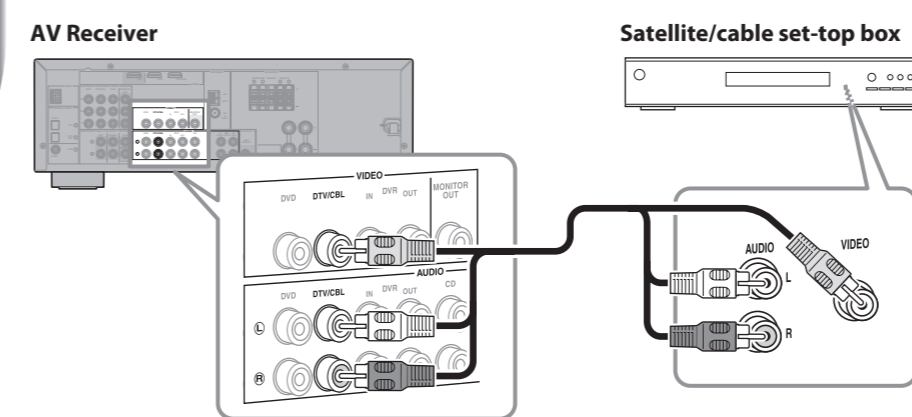
Use a video pin cable (not included) to connect the AV Receiver's MONITOR OUT jack to a composite video input on your TV, as shown.

2 Connecting your DVD player



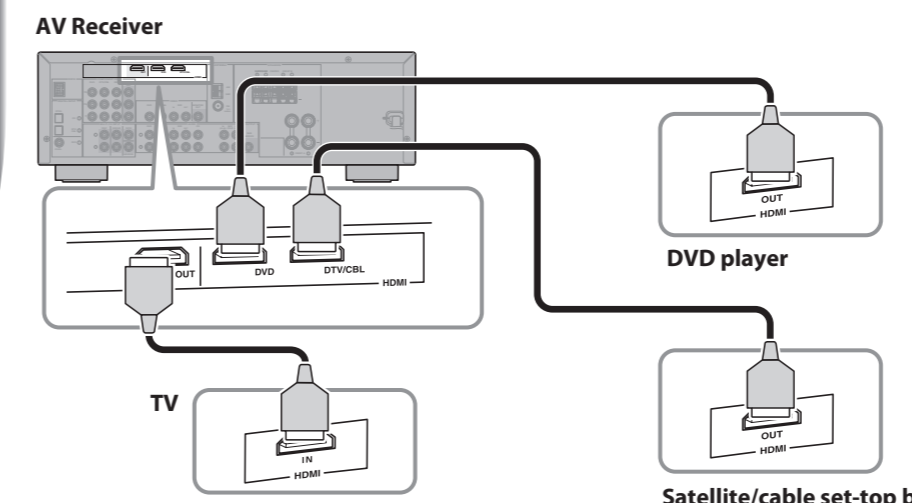
- Use a video pin cable (not included) to connect your DVD player's composite video output to the AV Receiver's DVD VIDEO jack, as shown.
- Use a coaxial digital audio cable (not included) to connect your DVD player's coaxial digital audio output to the AV Receiver's DVD DIGITAL INPUT jack, as shown.

3 Connecting your satellite/cable set-top box



Use an AV pin cable (not included) to connect your satellite/cable set-top box to the AV Receiver's DTV/CBL jacks, as shown.

4 Connecting HDMI-capable components

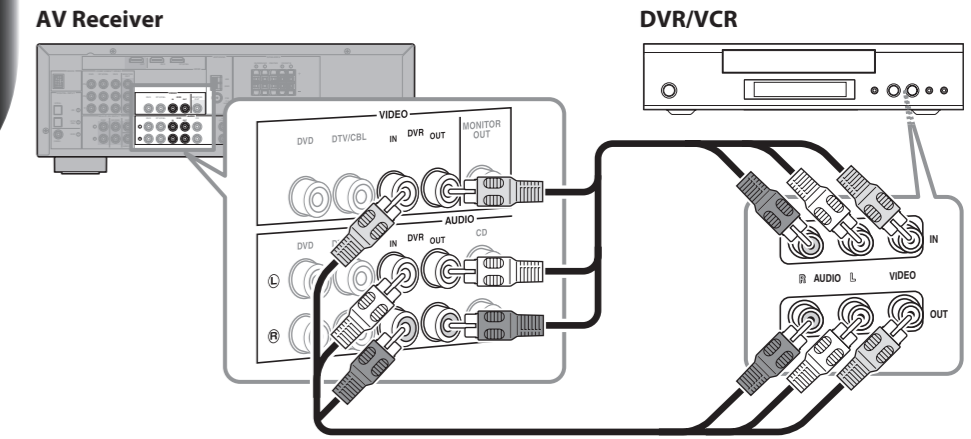


If your TV and DVD player or satellite/cable set-top box have HDMI jacks, you can connect them via the AV Receiver. Using HDMI cables (not included), connect the AV Receiver's HDMI OUT jack to an HDMI input on your TV, and connect your DVD player and satellite/cable set-top box to the AV Receiver's DVD and DTV/CBL HDMI jacks, respectively, as shown.

Note: Audio signals received by the HDMI inputs will be output by the HDMI-capable TV's speakers, not the speakers connected to the AV Receiver. To listen to an HDMI-capable component through the AV Receiver's speakers, you must make an analog or digital audio connection in addition to the HDMI connection, and mute the sound on the TV.

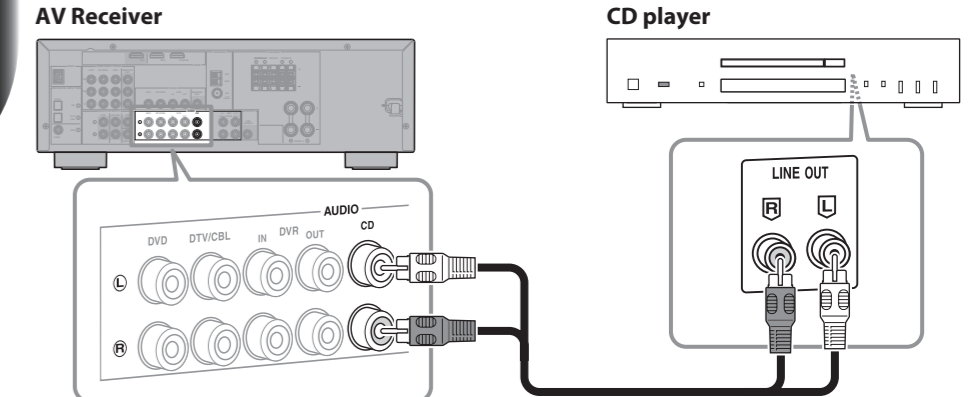
See the owner's manuals for more information about HDMI.

5 Connecting your DVR/VCR



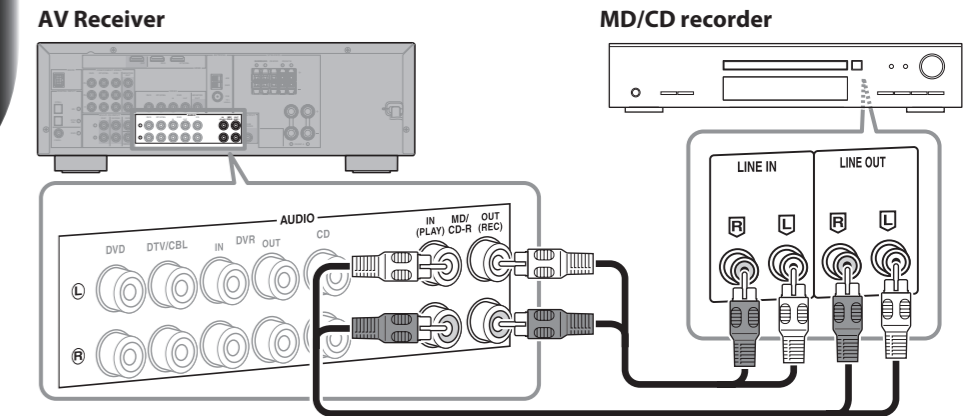
Use AV pin cables (not included) to connect your DVR (digital video recorder) or VCR to the AV Receiver's DVR IN/OUT jacks, as shown.

6 Connecting your CD player



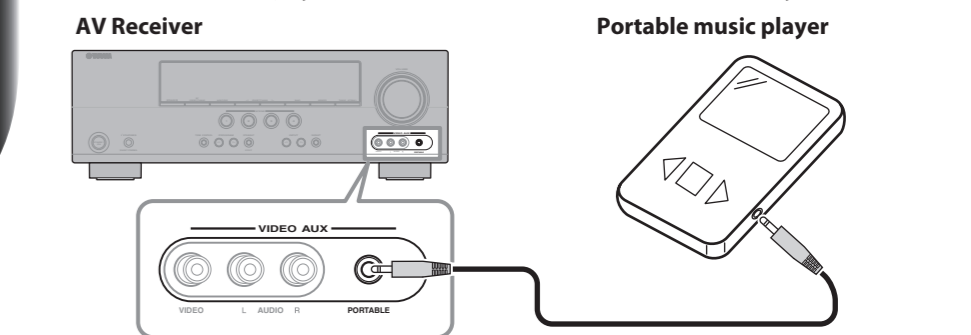
Use an audio pin cable (not included) to connect your CD player to the AV Receiver's CD jacks, as shown.

7 Connecting your MD/CD recorder



Use audio pin cables (not included) to connect your MD/CD player to the AV Receiver's MD/CD-R IN/OUT jacks, as shown.

8 Connecting your portable music player



Use a 3.5 mm stereo mini plug cable (not included) to connect your portable music player to the AV Receiver's PORTABLE jack (on the front panel), as shown.

If your AV Receiver has a DOCK jack (U.S.A. and Canada models), you can connect a Yamaha Universal Dock for iPod, such as the YDS-11, or a Yamaha Bluetooth Wireless Audio Receiver, such as the YBA-10 (both sold separately). See the AV Receiver's Owner's Manual for more information.

Almost Finished

- Connect the AV Receiver, Subwoofer, and your other AV components to suitable AC outlets.
- Turn on the AV Receiver first, then the Subwoofer and your other AV components.
- Install the batteries in the AV Receiver's remote control.
- See the relevant owner's manuals for full operating instructions.

Time to enjoy your Yamaha home theater system!

Now, relax and enjoy the great sound of your Yamaha home theater system.